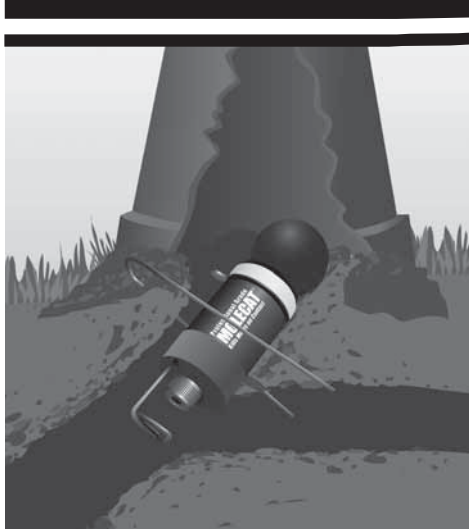


Instructions Precautions and Tips



Pictures shown without Plastic Scent Free Bag.

To Our Customers;

Thank you for your purchase of MOLECAT® the original powder activated garden tool with two (2) built in Safety features. Moles and Gophers stop here. Extermination is guaranteed by producing an extreme percussive blast. **For positive results, follow instructions.**








IMPORTANT NOTE: To understand proper use of MOLECAT® and **for your safety, read all Warnings, Testing Procedure, Arming Unit, Tips and How to Care for MOLECAT®** before using it for the first time.

Observe MOLECAT's two (2) safety features as explained on pages 2 & 3. Both **Safeties are released only after secured and anchored into the exit hole** as shown on page 3 instructions 13 and 14. When firing into the exit hole, the hole will absorb the noise and energy, so MOLECAT® is suited for operation within city limits.

Always use one (1) Scent Free Bag with (1) Extermination Cartridge. Follow care of unit on page 4.

Keeping your unit clean and oiled will extend the life of MOLECAT® and keep your warranty valid.

Included In Your Purchase

-  (1) MOLECAT® Unit & (1) Firing Barrel
-  (20) Extermination Cartridges
-  (20) Scent Free Bags (SFBag)
-  (1) Instruction Sheet
-  (1) Stainless Steel Staple / Anchor
-  (1) Cartridge Punch
-  (1) Storage Box

Warnings & Precautions

Carefully read instructions for the proper use and sequence of arming and disarming MOLECAT® safely

- A. Hot Plasma discharges from the .27 Cartridge and Firing Barrel at high velocity and can cause serious burns/injury/death to user and bystanders.
- B. "Clockwise" and "Counter Clockwise" are terms used to describe the use of the Hammer Knob on the non-discharging end of MOLECAT® and it is the Knob device by which MOLECAT® is set to discharge.
- C. Always wear Eye/Hearing safety gear when handling MOLECAT®.
- D. DO NOT place anything into Firing Barrel other than a Extermination Cartridge.
- E. DO NOT operate MOLECAT® in an enclosed area.
- F. Keep MOLECAT® and Extermination Cartridges safely away from Children, Minors and Pets.
- G. DO NOT point "Armed" unit at any living thing other than the intended pest.
- H. Keep Fingers clear of Safety Gauge and Hammer Knob when testing - pinching can result.
- I. DO NOT hold MOLECAT® by "Trigger Wire" or "Triangle". Hold by Hammer Knob and Sleeve only.
- J. Never exercise horseplay, tricks or foolishness with this tool. This is serious and could kill.
- K. Use good judgment in relation to your specific area, being thoughtful not to disturb neighbors.
- L. Use MOLECAT® unit in good operating condition. Follow "CARE of UNIT" on page 4.
- M. Always cover set MOLECAT® with a bucket or heavier cover such as a wheelbarrow as appropriate for the safety of children and pets.
- N. Do not set unit near seeping gases occurring naturally from the earth or near man made gas lines. Fire could result.
- O. Keep area clear of flammables. When triggered, MOLECAT® emits a blast of extreme hot plasmic fire and will ignite flammable materials.

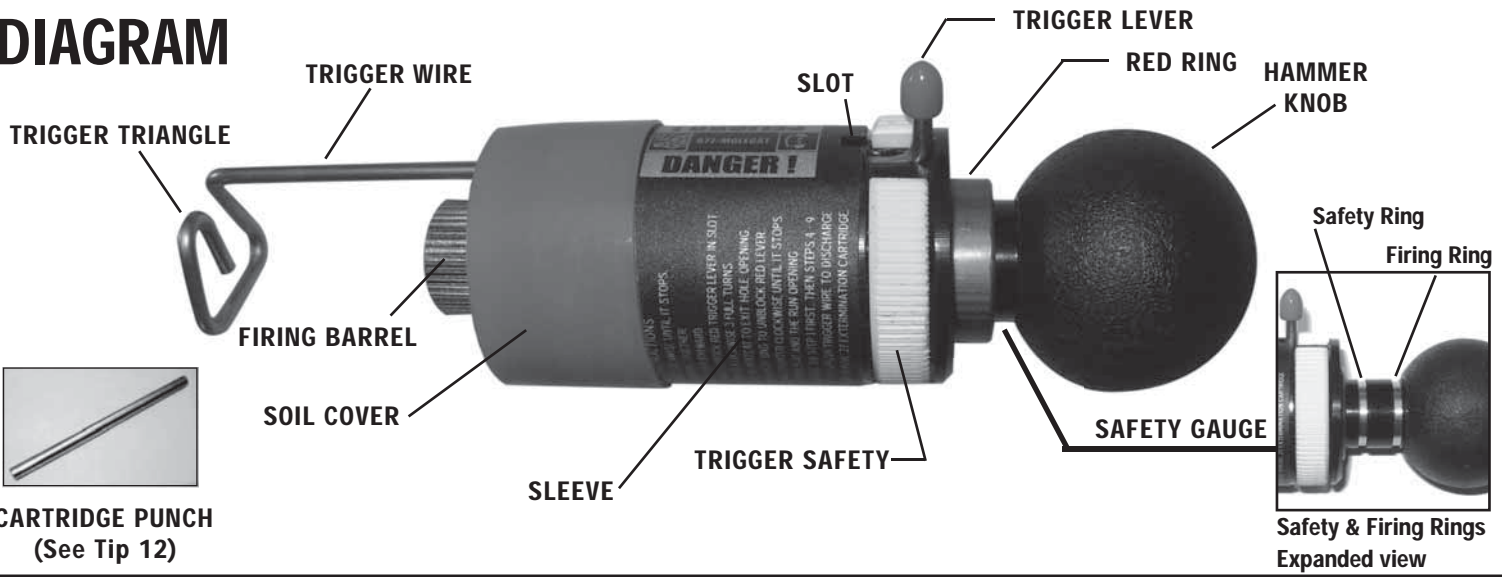
Extermination Cartridge Explosive Warnings

- Keep out of the reach of Children.
- Protect Eye/Hearing by wearing protection.
- Always load outdoors with adequate ventilation.
- DO NOT crush, strike, pry or expose to flame or heat.
- Always keep dry. Use plastic zip lock bag provided.
- DO NOT use in Firearms.
- Use only in MOLECAT® Powder Activated Tool designed for this specific load.

Lead Warning

Handling powder loads may result in exposure to lead and other substances known to cause cancer, birth defects, reproductive harm and other serious physical injury. Always wash hands thoroughly after handling.

DIAGRAM



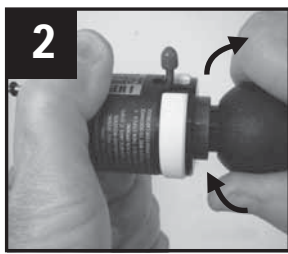
Testing Procedure

Practice steps 1-7 before inserting Extermination Cartridge

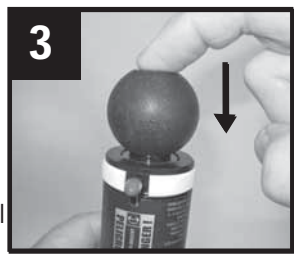
IMPORTANT: The sequence of 2, 3 & 4 must be followed or MOLECAT® will not set the Trigger Lever. Hold Trigger end down for steps 3, 4 & 5 as pictured below to assure correct Trigger sensitivity.



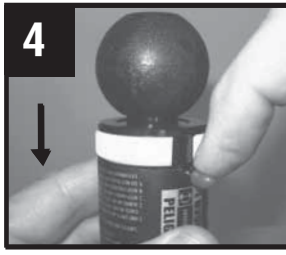
1 For Safety - Remove Firing Barrel: Turn counter clockwise and set aside from Housing Unit.



2 Firmly hold Sleeve. Do not use the red Soil Cover or Trigger Lever for leverage. Rotate Hammer Knob firmly **clockwise** until it **stops** turning.



3 Holding Sleeve, push Hammer Knob down until the Red Ring slides into Sleeve. Do not hold the red Soil Cover.



4 Push Trigger Lever forward into Slot. **Point Trigger Wire downward** to assist internal Ball Bearings into place.



5 **Trigger Safety On:** Rotate Trigger Safety left or right to block Trigger Lever into Slot.



6 **Hammer Knob Safety On:** Rotate Hammer Knob counter-clockwise to Safety Ring. This sets Spring & Hammer to Trigger and prevents Cartridge from firing.



Caution! The Hammer Knob controls the firing mechanism. Rotating Hammer Knob past the Safety Ring removes Hammer Safety and is **done only in Step #14**.

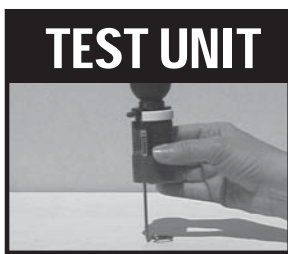


Barrel Damage Rotating the Hammer Knob past the Safety Ring when **testing** (without a Cartridge) will damage the Firing Barrel (as shown) and is not covered by the warranty.

A 3/16" rat tail file will file off divots if damage occurs.



7 **Trigger Safety Off:** Turn Trigger Safety left or right to unblock Trigger Lever.



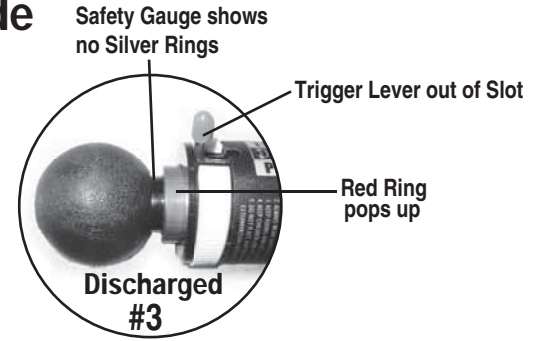
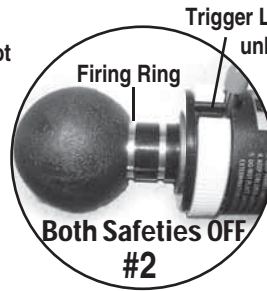
TEST UNIT Test by gently placing Trigger Triangle on a stable surface. It will make an audible "SNAP" sound under its own weight. **NOTE:** Red Ring pops up to show unit has activated.

8 **To Arm Unit:** Follow steps 1-6 above. **Skip step #7. Trigger Safety stays on until step #13.**

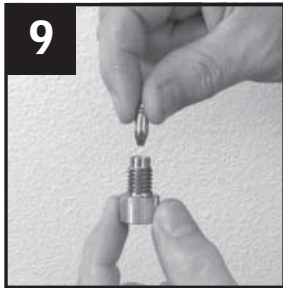
Important: Unit should look like #6 above with **both** safeties on to prevent firing. **Proceed to page 3 to insert cartridge.**

Arming Unit with Extermination Cartridge

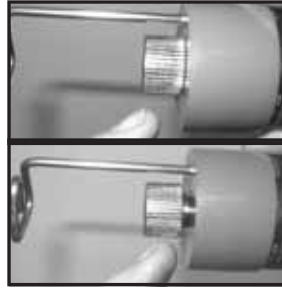
Always arm MOLECAT® outside



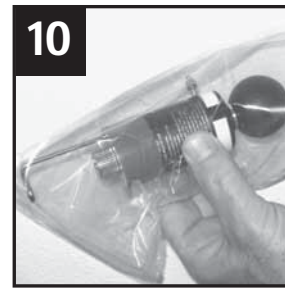
Safety First! Powder Activated Tool Wear Eye and Ear protection. Keep hands away from Firing Barrel except when loading and with both safeties ON as pictured above on example #1



9 Place Extermination Cartridge into Firing Barrel cavity as shown. Reinsert Firing Barrel into MOLECAT®.



IMPORTANT Firing Barrel Insert.
Correct
Incorrect



NOTE: Read Tip 1 Place entire MOLECAT® unit in a inside-out Scent Free Bag. Stir the Trigger end of MOLECAT® in loose soil to add natural scent on the SFBag. Set aside.



11 Scoop mound of dirt into a bucket. Use a tablespoon to open hole **allowing air to flow around unit and into the exit hole.** Use spoon handle to determine direction of the hole. See Tip #5.



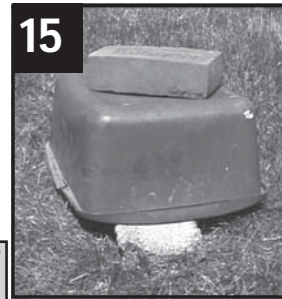
12 Place bagged MOLECAT® **halfway** into exit hole, then use Staple/Anchor prongs to **secure** MOLECAT® to the sides of the exit hole. Allow room to manipulate both Safeties.



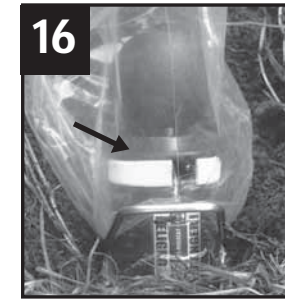
Trigger Safety Off: Gently turn Trigger Safety left or right to unblock Trigger Lever. Trigger Safety is now off. Unit will "snap" if SFBag tension is too tight but cartridge fire is prevented until Step 14. Reset if unit "snaps".



14 **Hammer Knob Position to Fire:** Carefully rotate Hammer Knob counterclockwise to Firing Ring to allow firing.
NOTE: Knob comes off for cleaning when rotated past the Firing Ring.



15 For safety, cover MOLECAT® with a bucket or other cover to protect children & pets. **IMPORTANT:** Allow air to circulate into the hole as shown. A moles' instinct is to close the open airway.



16 Unit has fired when Red Ring appears between Hammer Knob and Sleeve. No Silver Rings are showing. See Discharge picture #3 above.

IMPORTANT NOTES: Steps 6 and 14 explain how the Hammer Knob positions the Hammer. The Hammer will strike the Extermination Cartridge for discharge when Hammer Knob is turned counter clockwise to the Firing Ring. (See step 14 and top picture #2.) MOLECAT® creates an explosion and is not a body gripping trap. **95% of the time you will not see the dead pest.** The pressure expelled from the Extermination Cartridge will cause the pest to be blown back into its' tunnel. Leaving it in the hole will repel other pests from moving into that run.



Important Tips

One kill requires use of One Cartridge + One Scent Free Bag (SFBag).

1. Moles and gophers have an EXTREME sense of smell and hearing just like a dog. For best results rotate the Scent Free Bag (SFBag) inside out to ensure there is no scent that the pest detects as danger such as flash powder and hand oil on the SFBag.

Recommended Procedure to turn SFBag inside out:

a. Grab top opening of SFBag with both hands, thumbs inside.
b. Stuff outside of SFBag "inside out" with remaining fingers.
c. Push hand through using thumb and little finger to open up Bag corners. Once inside is out, be careful to not touch the Red Soil Cover and Trigger Wire half that anchors into the exit hole to keep danger scent away from pest. Place Trigger Triangle end of device into one corner of the SFBag. Grab the opposite corner and pull toward the unit to make a "tent" - careful to not touch the Trigger half end that inserts into exit hole. This "tent" enlarges the trigger area and will check the tension between Trigger and SFBag. Remember - the Trigger is sensitive - too much pressure on the Trigger Wire and the device will activate (or "snap") when Trigger Safety is taken off. See step #13 Note Box.

2. The first season using MOLECAT® requires persistence. Keep setting MOLECAT® until the underground defense of decomposing pests has been built around your property. The death scent in the run will repel other incoming pests.

3. For best results, use MOLECAT® early in the spring when the young emerge. As the season progresses and as the pests get older, they grow smarter and harder to exterminate. Strategy must be applied when hunting these animals.

4. Allowing airflow into the hole instinctively calls the **mole** to the opening to encounter MOLECAT® so open exit hole just enough for a small amount of airflow around the unit.

5. To ensure a good strike, use a probe to indicate there is a straight 8" throat into the exit hole before anchoring.

6. Anchor MOLECAT® securely to the exit hole. The Trigger Wire is sensitive when Step 13 and 14 Safeties are off and device will fire prematurely if it touches the sides of the hole with any movement. Secure from any wobble.

7. If the pest buries the unit, this is an indicator that it has gotten a danger scent. Use a clothes pin or clamp to close open end of bag and help keep dirt out of SFBag.

8. Use different types of scents such as WD40 or fisherman worm scent to confuse a smart **mole**.

9. Worms, air and water are used to bait **moles**. **Moles** smell water and air coming into open exit holes so a cup of water poured into the hole will instinctively call the pest back to investigate.

10. Place a night crawler in the open bag, shaking it into the corner and mash it for **mole** bait. Then rotate the SFBag inside out. Messy but it works!

11. **Gophers** are vegetarian and need to be baited. They generally leave the exit hole open. Place a small amount of peanut butter on the **outside** of SFBag on Trigger Triangle.

12. To remove spent Cartridges, (discharged only), unscrew the Firing Barrel 3 full turns. Insert Cartridge Punch through Trigger Triangle and into Firing Barrel, tap to dislodge spent shell. Remove Firing barrel to empty cartridge casing.

13. Use of construction flags will easily mark the position of MOLECAT®.

14. For updated Tips go to www.molecat.com "How To" tab.

15. For best results, use 1 MOLECAT® per acre. Dependent on severity of infestation or desire to quickly clear area, two units will work twice as fast.

Moving Unfired Unit to Another Hole

Step 1 - Before removing Unit from hole: Using index finger and thumb, gently rotate Knob **clockwise** until it stops turning. (Reverse step 14 on page 3).

Step 2 - Rotate Trigger Safety to block Trigger Lever forward into slot. See step 5 on page 2.

Step 3 - Unit is now safe to move to another hole, follow steps 10-16 to reset.

Disarm Unit

Step 1 - Before removing Unit from hole: Using index finger and thumb, gently rotate Knob **clockwise** until it stops turning. (Reverse step 14 on page 3).

Step 2 - Rotate Trigger Safety to unblock the Trigger Lever then pull back Trigger Lever out of Slot. Unit is now disarmed and safe to remove.

Step 3 - DO NOT use Cartridge Punch to remove unspent Cartridge. Always use hands to remove any unspent Cartridge.

Storage

1 - Release internal Spring tension: rotate Hammer Knob counterclockwise until you can feel a release of Spring tension.

2 - Always store in a safe dry place away from Children and Minors.

3 - As a safety key, store Firing Barrel separate from Unit, as on a keychain.

4 - Removing Cartridge: Follow Disarming Unit Step 3 above to remove live Cartridge. See Tip #12 to remove spent Cartridge.

Care of Unit - MOLECAT® will last a lifetime with regular maintenance.

MOLECAT® is all mechanical so DO NOT force water into unit when cleaning or allow to stand in water. It is important to use original MOLECAT® SFBags and Extermination Cartridges as instructed. Any other bag or cartridge will foil your chance of killing the pest and void the warranty.

Remove the Firing Barrel and Cartridge before proceeding. Use a clean damp rag/paper towel after each use to wipe off excess soil from unit body and all moveable parts. Proceed to clean the red Soil Cover inside and out.

Set MOLECAT® as shown at top of page 3 Example #1. Be sure to use **Trigger Safety** to block Trigger Lever forward into slot throughout cleaning.

Thoroughly clean and oil the following moveable parts.

Firing Barrel - lubricate inside threads with WD-40 or one drop of light weight machine oil.

Hammer Knob - Rotate counter-clockwise until Knob is removed and thread column is exposed. Clean inside Knob and outside column threads. A toothbrush works well.

Replace Hammer Knob and Firing Barrel. Unit is now clean and oiled

A \$25 Cleaning/Repair fee will result if Care of Unit is not followed.

Reload Kits / Accessories

Check your local hardware store or visit www.molecat.com.

100 Reload Kit (100 Cartridges, 100 SFB, 5 Staple/Anchors)

20 Reload Kit (20 Cartridges, 20 SFB, 1 Staple/Anchor)

100 Scent Free Bags (SFB)

Firing Barrel

Bunker Buster Firing Barrel

5 pack Staple/Anchor Kit

Cartridge Punch

6 minute Instructional DVD

Original MOLECAT® T-Shirt

Terms and Conditions

These terms and conditions apply to all products supplied by Triple T Machining Specialties, Inc. and/or Molecat, LLC ("Seller", "us", "our") to or for any person or entity ("Customer", "you", "your"), and all bids or contracts for such supply of products. These terms and conditions supersede any and all provisions of Customer's order relating to the products (as defined below) to the extent that such provisions are inconsistent with, differ from, are additional to, or limit these terms and conditions in any way.

1. Products. For purposes of these terms and conditions, the term "Product" or "Products" shall mean any products supplied or required to be supplied by the Seller to or for Customer under contract or otherwise, including without limitation items identified in the "description" provision of any contract for the supply of any products by Seller to or for Customer.

2. Title and Risk of Loss. Title to the Products and risk of loss thereof shall pass to customer at the date of delivery. Unless otherwise expressly agreed in writing, delivery and completion of any service shall be the date the service is provided or, if invoiced, the date of first invoice for such services presented to Customer by mail or other means. Delivery of Products shall be F.O.B. Seller's facilities at the address set forth above. Any shipment of any item shall be F.O.B. Seller's facilities at the address set forth above, and the cost of any such shipment shall be borne by Customer.

3. Limited Warranty. Seller warrants to Customer that the Products shall be free of defects in materials and workmanship for 90 days from date of purchase.

4. Matters not Warranted. Seller shall not be responsible for any non-conformities or damage caused by other than normal and proper usage, or contributed to by improper maintenance, misuse or abuse, alterations, repairs, or incorrect installation by Customer, Customer's agents, or assigns, or by others. Seller shall not be responsible for any improper use of the Products, failure by Customer to follow Product instructions, or use of the Products in excessive heat of 125 degrees Fahrenheit or higher.

5. Warranty Claims. To make a claim under this limited warranty, Customer must: (1) have the bill of sale, dated receipt or other dated proof of purchase, (2) contact our Customer Service Department at 1-877-MOLECAT (1-877-665-3228) during normal business hours (8-5 PST, M-F) or by email at info@molecat.com and **obtain a returned goods authorization number**, and (3) package the Products you claim are defective in their original packaging and send them with the bill of sale, receipt or other dated proof of purchase, the return authorization number, and a description of your claim, shipping prepaid, to Molecat LLC, Returned Goods Department, 11243 S. Beutel Rd, Oregon City, OR 97045. It is illegal to ship .27 blanks by US Mail. If any .27 blanks are being shipped individually or as part of the Molecat unit, they must be shipped to us by UPS ground service, prepaid. This limited warranty is void and is of no force or effect with respect to any defect unless, within 90 days from the date of purchase of the alleged defective Products, Customer delivers to Seller at Molecat LLC, 11243 S. Beutel Rd, Oregon City, OR 97045 a written claim fully describing the defect. Any suit for defective Products must be filed with a competent court as provided in paragraph 13 below within one year of the date of purchase.

6. Return of Products Purchased from Retail Store. Products purchased by Customer at a retail store must be returned to the store in accordance with the store's then current return policy. Products returned to us in error will be returned to Customer at Customer's cost and expense.

7. Return of Products Purchased Direct from Seller/Restocking Fee. Products purchased direct from us may be returned within 30 days of purchase for a full or partial refund unless the Products have been used by Customer. Customer agrees that a restocking fee of \$25 will be charged for all returns. To make a return of the unused Products purchased direct from us, Customer must: (1) have the bill of sale, dated receipt or other dated proof of purchase, (2) contact our Customer Service Department at 1-877-MOLECAT (1-877-665-3228) during normal business hours (8-5 PST, M-F) or by email at info@molecat.com and **obtain a returned goods authorization number**, and (3) package the Products **with all original contents** in their original packaging, and send them with the bill of sale, receipt or other dated proof of purchase, and the return authorization number, shipping prepaid, to Molecat LLC, Returned Goods Department, 11243 S. Beutel Rd, Oregon City, OR 97045. Credit or refund check will be issued in 4-5 weeks. It is illegal to ship .27 blanks by US Mail. If any .27 blanks are being shipped individually or as part of the Molecat unit, they must be shipped to us by UPS ground service, prepaid.

8. DISCLAIMER. EXCEPT AS OTHERWISE PROVIDED IN THESE TERMS AND CONDITIONS, SELLER HEREBY DISCLAIMS AND CUSTOMER HEREBY WAIVES ANY REPRESENTATIONS OR WARRANTIES, EXPRESS OR IMPLIED, AS TO ANY MATTER WHATSOEVER, INCLUDING WITHOUT LIMITATION, WORKMANLIKE SERVICE, THE DESIGN OR CONDITION OF THE PRODUCTS, AND THE PRODUCTS' MERCHANTABILITY OR FITNESS FOR ANY PARTICULAR PURPOSE. IN THOSE JURISDICTIONS WHERE IMPLIED WARRANTIES MAY NOT BE DISCLAIMED, ANY IMPLIED WARRANTY IS LIMITED ON DURATION TO THE 90 DAY DURATION OF THE EXPRESS LIMITED WARRANTY DESCRIBED IN THESE TERMS AND CONDITIONS. SOME STATES DO NOT ALLOW LIMITATION ON HOW LONG AN IMPLIED WARRANTY LASTS, SO THE LIMITATIONS IN THIS LIMITED WARRANTY MAY NOT APPLY TO CUSTOMER.

9. Exclusive Remedy. The total liability of Seller arising from any contract, warranty, or from the manufacture, sale, delivery, resale, use or handling of any Product, whether in contract, in tort (including negligence and strict liability) or otherwise shall be limited to return of the Product and repayment of the price, repair and replacement of nonconforming Product or parts, or return of the total amount Customer paid to Seller, at Seller's sole and exclusive option. This is an exclusive remedy. In no event shall damages awarded for any liability of Seller, its shareholders, directors, employees or agents exceed the amount of available coverage set forth in Seller's liability insurance coverage.

10. LIMITATION OF LIABILITY. SELLER WILL NOT BE LIABLE FOR SPECIAL, INCIDENTAL, CONSEQUENTIAL, INDIRECT OR SIMILAR DAMAGES, INJURY, DEATH, ANY DELAYS, OR LOST PROFITS ARISING FROM OR BASED ON THE SALE OR USE OF THE PRODUCTS, THE SERVICES PROVIDED, BREACH OF CONTRACT, NEGLIGENCE, STRICT LIABILITY OR OTHERWISE, EVEN IF SELLER HAS BEEN ADVISED OF THE POSSIBILITY OF SUCH DAMAGES.

Terms and Conditions, Cont.

Some states do not allow the exclusion or limitation of incidental or consequential damages, so the above limitation or exclusion may not apply to Customer.

11. **Force Majeure.** Seller shall not be liable for any failure or delay in the Products resulting from any cause beyond the reasonable control of the Seller; or from compliance by Seller with any governmental regulations or directives; or from acts of God, war, fires, or other casualty or accident, civil or labor disputes or disorders, or delays, or shortages in transportation or inability to obtain timely or in sufficient quality fuel, power, labor, manufacturing facilities or materials or Products from the usual sources of Seller.

12. **Indemnity.** Customer shall indemnify, defend, and hold Seller its officers, directors, agents, employees, successors, and assigns harmless from and against any and all claims, demands, damages, losses, liabilities, and obligations of every kind or description (including attorney fees and costs), arising out of, related to, or resulting from, in whole or in part, your, your employees, agents, representatives, third parties, or independent contractors' activities undertaken with respect to this agreement, their breach of this agreement, negligence, any other torts, or violations of any local, state, or federal law or regulation. Should any claim covered by this indemnification provision be asserted against Seller, Seller shall notify Customer as promptly as practicable and give it an opportunity to defend the same, and Seller shall reasonably cooperate with Customer in connection with such defense. In the event that Customer shall fail to defend the claim within a reasonable time, Seller shall be entitled to assume the defense thereof with counsel of Seller's choice, and Customer shall be liable to repay Seller for all Seller's expenses reasonably incurred in connection with said defense, including reasonable attorney fees, costs, and settlement payments.

13. **Interpretation, Jurisdiction, Venue.** These terms and conditions and all other agreements between Seller and Customer shall in all respects be governed, construed and interpreted by the laws of the State of Oregon. Customer consents to and submits to the jurisdiction of all state and federal courts in Oregon. Customer agrees that venue for any action or proceeding shall be conducted in the state circuit court located in Clackamas County, Oregon, or in any federal courts located in Multnomah County, Oregon.

14. **Attorney Fees.** If Seller hires an attorney to enforce or interpret these terms and conditions, or any other agreement with Customer, Customer agrees to pay Seller's attorneys' fees and costs. The prevailing party in any action or proceeding to enforce or interpret these terms and conditions or any other agreement between the parties will be entitled to costs and reasonable attorneys' fees, at trial and on appeal; and the costs of collecting any judgment obtained including any costs or reasonable attorneys' fees incurred in any bankruptcy proceeding.

15. **Severability.** If any term or provision of these terms and conditions is held by any court or other competent authority to be illegal or unenforceable, the remaining terms and provisions shall not be affected.

16. **Not Assignable.** This warranty applies to the original Customer only and is not transferrable or assignable. Should the Customer transfer, sell, distribute, or otherwise dispose of the Products, the warranty becomes void.

17. **Entire Agreement.** Except to the extent the parties otherwise agree in writing, these terms and conditions are the exclusive expression of the understanding of the parties in connection with the Products.

Contact Information

Visit www.molecat.com contact page
or call support at **503-656-7768** or **877-655-3228**.

Please let us know how **MOLECAT**[®] unit performed
for you. We appreciate your emails and pictures.